



HESS
AUCTION GROUP

Public Auction

REAL ESTATE
PERSONAL PROPERTY

AFFORDABLE MANHEIM BOROUGH RANCH STYLE HOME



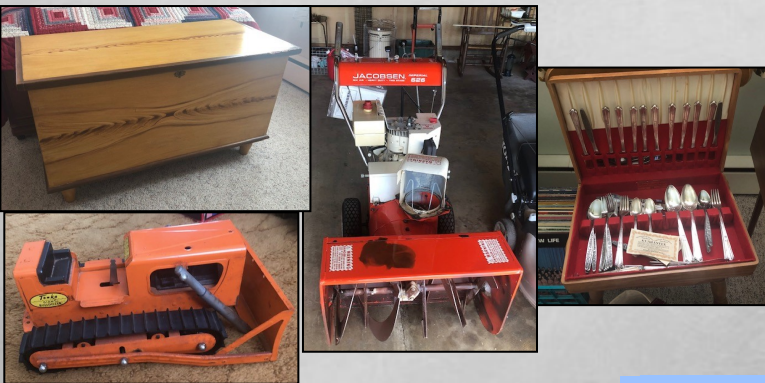
Thurs. June 11, 2020

Personal Property Online Only • 6PM Real Estate

308 WEST END AVE.

MANHEIM, PA 17545

This affordable Manheim Borough home has been well maintained but is in need of some cosmetic updating. The interior boasts plenty of potential with the main floor featuring a living room with a wood-burning stone fireplace, kitchen with pantry, three bedrooms and full bath with tub/shower combo. The basement hosts a finished family room with wood-burning stone fireplace. Additional amenities include a screened in patio and attached two-car garage with laundry area.



Call For Information

Auction for: Orpha Foreman Est.
Attorney: JD Young

AUCTIONEER'S NOTE: SETTLING AN ESTATE

***SEE REVERSE SIDE
FOR MORE***

For information about financing call 717-664-5238

Real Estate Terms & Conditions: 10% down day of sale. Balance due at settlement on or before 45 days. Announcements made on day of sale take precedence over advertised information.

JOHN M. HESS AUCTION SERVICE 717-664-5238 or 877-599-8894 HESSAUCTIONGROUP.COM
AY000253L



Type: 1-story
Construction: Frame
Exterior: Aluminum, Wood & Stone
Roof: Asphalt
Garage: 2-Car w/ Laundry Area
Square Footage: 1,337sq. ft.
Lot Size: 0.21
Year Built: 1955

Heating/Cooling: Fuel Oil, Hot Water Baseboard
(Natural Gas Available at Street)
Water/Sewer: Public, Water Conditioning System
Zoning: Residential
Taxes: \$3,342.96
School District: Manheim Central SD
Township: Manheim Borough

First Floor

Living Room: 12'11" x 27'2", Carpet, Wood burning Stone Fireplace

Kitchen: 9'7" x 14'6", Pantry with attic access, Vinyl

Dining Room/Bedroom 3: 11'1" x 13'2", Carpet, Built in corner cabinet

Bedroom 1: 14'1" x 10'12", Carpet

Bedroom 2: 10'8" x 13'1", Carpet

Bath: 9'3" x 7', Tub/Shower Combination, Linen, Tile wall surround, Vinyl

Lower Level:

Finished Family Room: 12'5" x 29'1", Carpet, Wood burning Stone Fireplace

Sump Pump

Exterior:

Screened Patio



All Measurements are Approximate

Personal Property:

Nice selection of antiques/collectibles including: Lg. leaf ware platters, ironstone platter, fiesta, early kitchen wares, C.I. frying pans incl. Erie; Wagner etc., jadeite, Pyrex nesting bowls, glassware incl. opalescent overlay cake plate, transfer wear, pink & green depression, flatware set, textiles incl. quilts, contemporary sampler, early printed tea towels etc. early German cuckoo clock, bull terrier doorstop, drop handled painted milk cans, contemporary decorative glass, crocs & jugs, early Brethren hymnbook, toys & dolls incl. pressed steel trucks, Hubly, painted wooden toys, Hubly farm toys, Oliver farm toy implements, lg. Bavarian dish set, baskets, carnival glass, primitives incl. galvanized washtub, early table top platform scales, household & woodworking tools, local advertising incl. NG Hershey's Manheim, Lantern, early forged utensils, lg. braided rug & many more items of interest; **Furniture:** early green painted jelly cupboard, softwood dry sink, early refinished drop leaf extension table, cherry drop leaf table w/ 10 boards, ornately decorated Oak rocking chair, mini. dropleaf table, mahogany slant top secretary's desk, Childs oak rocker, oak washstand, 2 Cherry single beds & bookcase, oak ornately carved dresser, Sunday school chairs, 1917 (possibly Manheim) green painted blanket chest, 4pc waterfall bedroom suit, Small cedar chest, contemporary upholstered recliner, sofa, 3pc cherry end table set, Mount Hope Church primitive wooden bench, arched back plank bottom chairs, acorn rocker, early school desk, early porch swing, butter print decorated sideboard, early wood box, lg. selection of end tables & plant stands, lg. cedar chest, several misc. side chairs, small glass front bookcase, early domestic sewing machine, 3pc dinette set w/ drop leaf table, paint decorated plank bottom rocker, Childs soft wood rocker, GE washer, small wardrobe, Primitive work bench; **Lawn & garden items:** Jacobson 626 snowblower, Honda easy start self-propelled mower, long handled tools & garden related items, bag wagon, 30ft. aluminum extension ladder etc.

LENDERS

Chris Karshin
Fulton Bank
717-682-0693

CKarshin@fultonmortgage.com
company.com

Dwight Rohrer
First Citizen's Community Bank
717-572-1492

ddroh-rer@firstcitizensbank.com

Megan Livengood
Bank of Bird-In-Hand
717-929-2208

mlivengood@bihbank.com

Marvin Charles
MidAtlantic Farm Credit
717-368-7387

mcharles@mafc.com

Dale Hershey
Univest
717-519-7077

hersheyd@univest.com

This fact sheet is provided as a courtesy. Information included is believed to be accurate & has been provided to us by the consignor. John M. Hess Auction Service is not responsible for any clerical errors or misrepresentations by consignor in above printed materials. The purchaser is responsible to research and verify any and all information regarding this property.