



HESS
AUCTION GROUP

Public Auction
REAL ESTATE

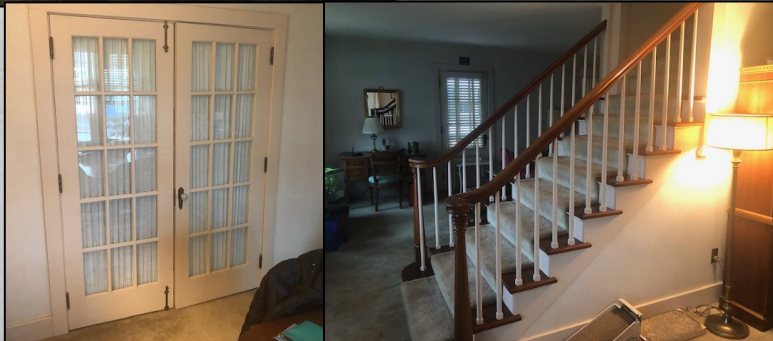
CHARMING, WELL-LOCATED LEBANON CITY HOME



Thurs. March 25, 2021 • 6PM

**616 CORNWALL RD.
LEBANON, PA 17042**

This attractive, well-landscaped, all brick two-story home is in need of minor cosmetic updates but has been extremely well cared for and features many unique architectural features. **The main floor** includes a large living room, dining room with French doors leading to the kitchen and half bath. **The second floor** is accessed by an attractive open staircase with banister railings and includes four bedrooms and a full bath. **Additional amenities** include a large attic with full staircase, spacious basement, attached garage, off-street parking, wide porches and a large well landscaped backyard with brick patio.



AUCTIONEER'S NOTE:

**Open Houses: Sat. March 13, 10am – 12pm
& Mon. March 15, 5pm – 6:30pm**
Or Call For An Appointment

Auction for: Elizabeth Heiligman Est. (Fulton Bank, Executor)
Attorney: George E. Christianson, Esquire

For information about financing call 717-664-5238

Real Estate Terms & Conditions: 10% down day of sale. Balance due at settlement on or before 45 days.
Announcements made on day of sale take precedence over advertised information.

JOHN M. HESS AUCTION SERVICE 717-664-5238 or 877-599-8894 HESSAUCTIONGROUP.COM
AY000253L



Type: 2-Story
Exterior: Brick
Garage: Attached 1-Car Garage
Square Footage: 1,960sq. ft.
Lot Size: 0.43 acres
Year Built: 1939
Heating/Cooling: Fuel Oil Hot Water

Flooring: Carpet, Linoleum
Water/Sewer: Public
Zoning: Residential 1 Family
Taxes: \$3,240.95
School District: Lebanon SD
Township: Lebanon City, Ward 2



LENDERS

Chris Karshin
Fulton Bank
717-682-0693
CKarshin@fultonmortgage
company.com

Dwight Rohrer
First Citizen's Community
Bank
717-572-1492
drohrer@bihbankbank.com

Megan Livengood
Bank of Bird-In-Hand
717-929-2208
mlivengood@bihbank.com

Marvin Charles
MidAtlantic Farm Credit
717-368-7387
mcharles@mafc.com

Dale Hershey
Univest
717-519-7077
hersheyd@univest.com

This fact sheet is provided as a courtesy. Information included is believed to be accurate & has been provided to us by the consignor. John M. Hess Auction Service is not responsible for any clerical errors or misrepresentations by consignor in above printed materials. The purchaser is responsible to research and verify any and all information regarding this property.