



HESS
AUCTION GROUP

Public Auction

REAL ESTATE
PERSONAL PROPERTY

4 BEDROOM COGAN STATION HOME ON LARGE LOT



Tuesday, June 29, 2021

Personal Property 4PM • 6PM Real Estate

**8904 LYCOMING CREEK RD.
COGAN STATION, PA 17728**

This 4-bedroom, Cogan station home sits on a large, open lot right off Route 15. **The first floor features** an eat in kitchen, dining room, living room, full bath with large shower, enclosed porch with laundry room and storage. **The second-floor** hosts 4 bedrooms and a storage closet. **The full basement** is only accessible via the exterior and was utilized as a workshop and utility area for mechanicals. **Additional amenities** include a rear enclosed porch, knotty pine interior.

**Open House: Wed. June 16, 5pm-6:30pm
& Fri. June 18, 5pm-6:30pm
Or Call For An Appointment**

Auction for: Gary Rogers Est

For information about financing call 717-664-5238

**6% BUYER'S PREMIUM ON REAL ESTATE
10% BUYER'S PREMIUM ON PERSONAL PROPERTY**

Real Estate Terms & Conditions: 10% down day of sale. Balance due at settlement on or before 45 days. Announcements made on day of sale take precedence over advertised information.

**JOHN M. HESS AUCTION SERVICE 717-664-5238 or 877-599-8894 HESSAUCTIONGROUP.COM
AY000253L**

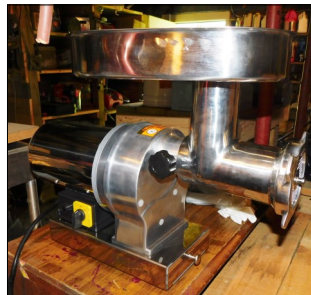
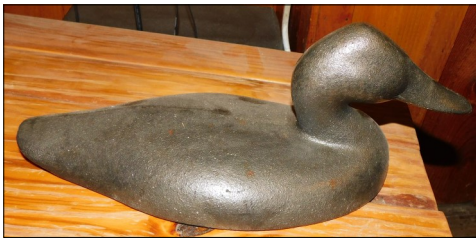


Type: 2-Story
Construction: Frame
Exterior: Baton Board
Roof: Shingle/Rubber
Square Footage: 1,280sq. ft.
Lot Size: 0.50 acres
Year Built: 1943
Heating/Cooling: Oil Hot Air, Electric Water Heater

Flooring: Mixed
Water/Sewer: On-Site
Zoning: Residential
Taxes: \$1,209.11
School District: Williamsport Area SD
Township: Lewis Township

Personal Property

Butchering Equipment to include cast iron kettles, sausage stuffer, electric meat grinder, iron hooks, pulleys, and knives, Colt Firearms Co. advertising, large selection of tools, taxidermy, guitar, gas powered Auger, modern & semi-antique furniture, housewares, anvil, milk cans, turkey cooker, park bench, air compressor, battery charger, Coleman lanterns, vintage wooden pulleys, Echo weed trimmer, lawn mowers, bench vise, trolling motor, Echo & Stihl chainsaws, large collection of Zippo Lighters, Hiawatha Williamsport, PA Iron Steamboat in shape of PA, Buch No. 3 Corn sheller, Lycoming County Automobile Club license plate topper, Mercury outboard motor, appliances to include upright & chest freezers, Gander Mtn. No. 32 meat grinder, Gamefisher Al. boat with trailer, iron duck decoy weight, Eagle flag topper, selection of knives & much more! Many items not listed!



LENDERS

Chris Karshin
Fulton Bank
717-682-0693
CKarshin@fultonmortgagecompany.com

Dwight Rohrer
Bank of Bird-In-Hand
717-572-1492
drohrer@bihbank.com

Megan Livengood
Bank of Bird-In-Hand
717-929-2208
mlivengood@bihbank.com

Marvin Charles
MidAtlantic Farm Credit
717-368-7387
mcharles@mafc.com

Dale Hershey
Univest
717-519-7077
hersheyd@univest.com

This fact sheet is provided as a courtesy. Information included is believed to be accurate & has been provided to us by the consignor. John M. Hess Auction Service is not responsible for any clerical errors or misrepresentations by consignor in above printed materials. The purchaser is responsible to research and verify any and all information regarding this property.