



HESS
AUCTION GROUP

Public Auction

REAL ESTATE

SHORT NOTICE SALE 2.68 ACRE COUNTRY HOMESTEAD

Wed. September 14, 2022 • 6PM

1972 SCHOOLHOUSE RD.
MIDDLETOWN, PA 17057

This 2.68-acre country homestead features a two-story home and 2-bay bank barn. The interior of the home includes a living room, kitchen, dining room and powder room all on the first floor. **The second-floor** hosts three bedrooms, a full bathroom, and access to the walk-up attic. **Additional amenities** includes a pond, small pasture for animals, small section of wooded acreage, and easy access to Route 283, Hershey Park and Hershey Medical Center. The house has been in a fire and has been totally cleaned out to the studs and sealed. **Start with a blank slate for remodeling.**

AUCTIONEER'S NOTE: DON'T MISS THIS OPPORTUNITY

**Open Houses: Sat. Sept. 3, 10am – 12pm
& Tues. Sept. 6, 5pm – 6:30pm
Or Call For An Appointment**

Auction for: Estate of Jay Ebersole
Attorney: Karl Kreiser

For information about financing call 717-664-5238

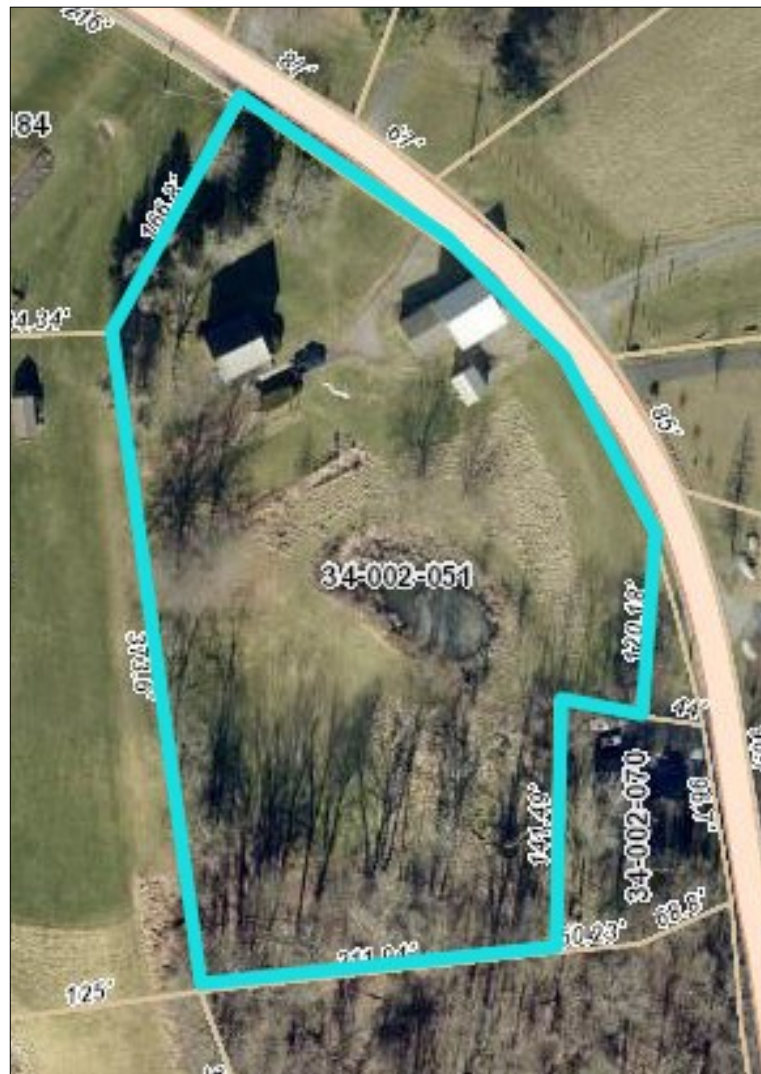
Real Estate Terms & Conditions: 10% down day of sale. Balance due at settlement on or before 45 days.
Announcements made on day of sale take precedence over advertised information.

JOHN M. HESS AUCTION SERVICE 717-664-5238 or 877-599-8894 HESSAUCTIONGROUP.COM
AY000253L



Type: 2-Story
Construction: Frame
Square Footage: 1,565sq. ft.
Lot Size: 2.68 acres
Year Built: 1900
Heating/Cooling: None
Water/Sewer: On-site
Zoning:

Taxes: Approx. \$1,153
School District: Lower Dauphin SD
Township: Londonderry Township



LENDERS

Chris Karshin
Fulton Bank
717-682-0693
CKarshin@fultonmortgag
ecompany.com

Dwight Rohrer
Bank of Bird-In-Hand
717-572-1492
drohrer@bihbank.com

Megan Livengood
Bank of Bird-In-Hand
717-929-2208
mliven-
good@bihbank.com

Marvin Charles
Farm Credit
717-368-7387
mcharles@horizonfc.com

Dale Hershey
Univest
717-519-7077
hersheyd@univest.net

Jason R. Landis
First Citizens Community
Bank
717-575-7435
jrlandis@myfccb.com

This fact sheet is provided as a courtesy. Information included is believed to be accurate & has been provided to us by the con-
signor. John M. Hess Auction Service is not responsible for any clerical errors or misrepresentations by consignor in above printed
materials. The purchaser is responsible to research and verify any and all information regarding this property.