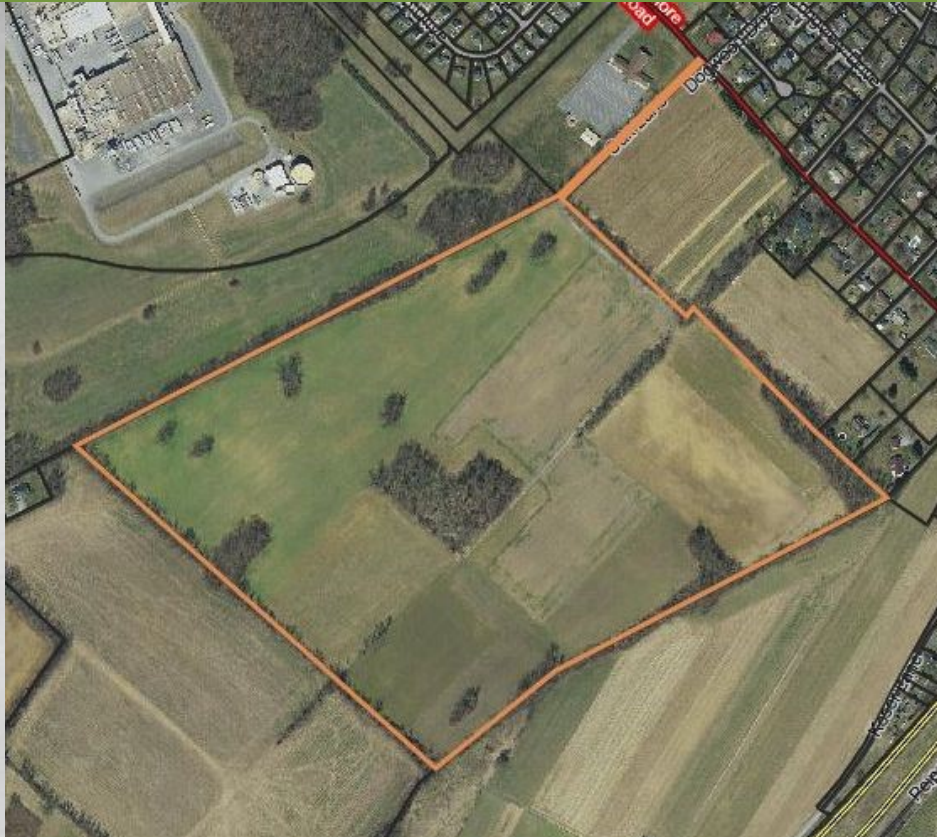




HESS
AUCTION GROUP

Public Auction
REAL ESTATE

92.44 ACRE SHIPPENSBURG FARM



Monday, July 10, 2023 • 1PM

**480 BALTIMORE RD.
SHIPPENSBURG, PA 17257**

This 92.44 acre farm boasts level, gently rolling, highly productive farm ground located just outside the town of Shippensburg. **The are no buildings or improvements** on the property and it will be available to plant immediately following the auction if desired. **Additional amenities** include close proximity to public water and sewer and easy access to Routes 11 and 81.

Working in Conjunction with Terry Shetter of Shetter's Auctioneering Service

Auction for: Covenant Business Group LLC
Attorney: John M. Coles, Esquire

For information about financing call 717-664-5238

Real Estate Terms & Conditions: 10% down day of sale. Balance due at settlement on or before 45 days. Announcements made on day of sale take precedence over advertised information.

JOHN M. HESS AUCTION SERVICE 717-664-5238 or 877-599-8894 HESSAUCTIONGROUP.COM
AY000253L



Lot Size: 92.44 acres
Zoning: Village Center
Taxes: \$9628.58
School District: Shippensburg Area SD
Township: Southampton Township

LENDERS

Chris Karshin
Fulton Bank
717-682-0693
CKarshin@fultonmortgagecompany.com

Dwight Rohrer
Bank of Bird-In-Hand
717-572-1492
drohrer@bihbank.com

Megan Livengood
Bank of Bird-In-Hand
717-929-2208
mlivengood@bihbank.com

Marvin Charles
Farm Credit
717-368-7387
mcharles@horizonfc.com

Dale Hershey
Univest
717-519-7077
hersheyd@univest.net

Jason R. Landis
First Citizens Community Bank
717-575-7435
jrlandis@myfccb.com

Chad Rosenberry
Orrstown Bank
717-263-6722
crosenberry@orrstown.com

Dave Zimmerman
F&M Trust
717-243-1443
davezimmerman@fmtrust.com