

ARCHITECTURAL COLLECTION OF THE LATE WILLIAM K. DU PONT



From the Rocky Hill Collection: outstanding sandstone trough, dated millstones, historic architectural lumber, hinges, building supplies and building stone auction..

Highlights only, sale will include many more items

Extremely rare 14'3" Sandstone Trough, unusually shaped 6'6"x3'10" sandstone trough, 4'5" sandstone, splash block, 4' diameter sandstone Millstone, 3'5" sandstone triangular splash block, **extremely rare 6' diameter sandstone Millstone**, two unusually small 2' diameter sandstone millstones, **5'6" diameter sandstone Millstone**, large quantity of hand-dressed building stone from PA Courthouse, large sections of flagstone, patio or sidewalk blocks, sandstone steps, large dressed limestone steps from Carlisle, PA Courthouse (some more than 7' in length), small quantity of cobblestone, and quartz landscaping boulders.

Architectural items: impressive contemporary reproduction raised panel fireplace mantel from du Pont farmhouse, large selection of raised panel doors and door sills, arched door frames, large selection of barn floor and attic floor, tongue and groove lumber, terra-cotta roof tile, staircases, **original hand-hewn impressive 8', 9' and 10' heavy fireplace mantels**, antique deconstructed barn beams, 27' long hand-hewn and mortised beams, salvaged dimensional lumber, nice selection of 20' plus shaped barn logs, **cast iron hardware and cast-iron trough**, Indian Artifacts.

Sat. Nov. 11, 2023 • 9AM

Corner Ketch Rd. Newark DE 19711
(200ft. Northwest of Pigeon Hollow Rd.
& Corner Ketch Rd. Intersection)



FEATURES



IN-PERSON & ONLINE BIDDING



OUTSTANDING ARCHITECTURAL PIECES

Auction for: The du Pont Family

Buyer's Premium: 10% On-Site • 15% Online



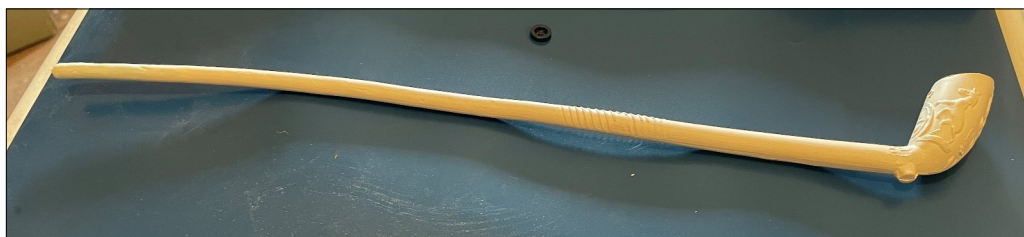
717-664-5238 or 877-599-8894

www.hessauctiongroup.com

contact@hessauctiongroup.com

JOHN M. HESS AUCTION SERVICE, INC.

AY000253L



This fact sheet is provided as a courtesy. Information included is believed to be accurate & has been provided to us by the consignor. John M. Hess Auction Service is not responsible for any clerical errors or misrepresentations by consignor in above printed materials. The purchaser is responsible to research and verify any and all information regarding this property.