

STOLTZFUS FARM EQUIPMENT



Wed. April 17, 2024
Approx. 11:30AM

2302 CAMP RD.
MANHEIM, PA 17545

Horses & Mules: Jack-12 year old mule, good lead mule, works on either side or in jockey, has lots of snap (Raised by Christ Stoltzfus; Jane-smooth mouth, works good anywhere, single or double; **Barney-2 year old Belgian gelding sired by Triple J Master Jason, Halter trained;** **Bonnie-Belgian yearling filly sired by Triple J Master Jason, Halter trained;** Betty-24 year old Belgian Mare, great dependable horse, has snap, works anywhere.

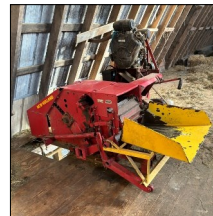
Tobacco Equipment: 34'x150' Superior greenhouse structure fully scaffolded for tobacco, 2 J.S. Ladder wagons with Farmbilt running gears, Fisher 8-row 1 horse tobacco sprayer w/ rinse tanks & 6hp Robin engine, McCormick deering cultivator w/ applicator, New Idea 1-row transplanter, 10 Lathe La-z-Susan, Minnich tobacco press, Triple tobacco press, Double tobacco box w/ no press, 10,000+ tobacco lathe (mostly yellow pine), tobacco side dress, tobacco shears & so much more!

Farm & Tillage Equipment: Avant 750 Articulating loader w/ 4030hrs, 55" smooth bucket, pallet forks, hay spear, 7' Sukup 2050 notil grain dill w/ hydraulic lift, Fisher 38' Crop Sprayer w/ 120gal. tank, foam markers, rinse tank, & Honda engine, White Horse 410 2-way hydraulic plow, New Idea 206 manure spreader, portable E.L.S 10' high pressure manure pump, E.L.S Riser w/ valve, E.L.S adjustable pipe stand, Approx. 250' 6" layflat hose, Vicon spreader w/ engine mount, McCormick 1-horse binder (no engine), Cedar forecart w/ torsion axel & Al. tongue, Beiler forecart w/ Al. tongue, Pioneer 8' cultumulcher, New Idea 323 1-row corn picker, 2-horse barnyard scraper cart.

Hay Equipment: EHE 18' tedder w/ vanguard 16hp engine, New Holland 273 baler w/ 2cyl. Wisconsin engine, New Holland 456 mower w/ 9' bar incl. 4cyl Wisconsin engine, New Holland 256 Rake, New Holland 56 rake, New Holland 402 crimper w/ sidewheel kit, 28' Hydrulic skeleton elevator, Joes machinery 717 stationary haylage chopper w/ Vanguard 35hp engine, Nicholson 7' Tedder, Gandy dry applicator w/ 12v motor, 4 flat wagons incl. 32 w/o running gears. **18 4x54 bales inline wrapped 2nd cutting alfalfa grass mix haylage.**

Milkhouse & Diesel Related: Duetz air cooled 3cyl. Deisel, Georgetown hydraulics tunnel ventilation system, 3cyl. Iveco fan diesel, 10hp Saylor Beall air compressor, Masport vacuum pump with oil reclaimer, cooling compressor, line shaft, Brubaker Refrigeration cooling condenser, (2) 275gal. fuel tanks, 1000gal. propane tank, (5) stainless steel buckets including 55lbs, 65lbs, 75lbs, 80lbs, 6-unit Kleen-Flow milker washer, 4 Westfalia Top Milker units w/ Orbiter 350 claws, 250lb Sputnik stainless steel washer tub, 24" twin tubs, PVC bucket rack, filter dispenser, 400gal stainless steel holding tank converted to icebox, Frigidaire electric refrigerator.

Shed & Misc.: 12'x24' run-in shed w/ board & batten siding, 8'x10' 2-run dog kennel w/ outside run, Advantage Feeders 1200 HD sheep feeder, 2 Farmco MFG 4'x8' hay feeders, various 75gal. totes, 150gal. Rubbermaid water trough, 2 compartment wooden feed cart, 2 wooden silage carts, 4'x7' calf-tel divider panels (for 6 complete pens), 6 complete harness sets incl. bridle, collars, bioplastic front gear w/ steel, Hames 2 checklines, backers, jockey sticks, & more! (2) 4-horse hitches, various 3 & 2 horse hitches, 6 horse hitch (beam only), Irrigation pump, sand filter, fertilizer injector, cardboard produce bins, pallets, Clipmaster pneumatic animal clippers, cyclops solar powered fence charger, **many more items not mentioned!**



Auction for: Christ & Elizabeth Stoltzfus

MORE PICTURES ON BACK

LEAD AUCTIONEER: Levi Zook (717-210-8689)



717-664-5238 or 877-599-8894

www.hessauctiongroup.com

contact@hessauctiongroup.com



This fact sheet is provided as a courtesy. Information included is believed to be accurate & has been provided to us by the consignor. John M. Hess Auction Service is not responsible for any clerical errors or misrepresentations by consignor in above printed materials. The purchaser is responsible to research and verify any and all information regarding this property.