

CONESTOGA AFFORDABLE COUNTRY PROPERTY W/ 47'X32' BARN

Tuesday, October 21, 2025 • 6pm

3320 RIVER RD.
CONESTOGA, PA 17516

This country property offers over 1.5 acres of land and includes a three-bedroom home, a 47' x 32' tobacco barn, and a spacious detached four-car garage. **Surrounded by scenic farmland, the home features** a unique split first floor with two living rooms and two kitchens. **The second floor opens** to a large gathering space, three bedrooms, and two full bathrooms. **Additional amenities include** an unfinished basement, beautiful farmland views, a private backyard, and easy access to the Susquehanna River. **While this home is in need of some cosmetic updating, it offers great potential!**



**Open Houses: Sat. October 11, 10am-12pm
& Mon. October 13, 5pm-6:30pm
Or Call For An Appointment**



FEATURES



DETACHED 4-CAR GARAGE



1.5+ ACRES



FARMLAND VIEWS



Auction for: Richard Brenner
Attorney: Kim Carter Paterson

LEAD AUCTIONEER: John M. Hess

717-664-5238 or 877-599-8894

www.hessauctiongroup.com

contact@hessauctiongroup.com

JOHN M. HESS AUCTION SERVICE, INC.

AY000253L

Type: Two Story
Construction: Frame
Exterior: Metal Siding
Roof: Preformed Metal
Garage: Detached 4-Car
Square Footage: 1,926 sq. ft.
Lot Size: 1.74 acres
Year Built: 1810

Heating/Cooling: Oil Hot Water Radiators
Water/Sewer: Well Water & Septic Sewage
Zoning: Agricultural
Taxes: \$5,079
School District: Penn Manor SD
Township: Manor Twp.

First Floor

Left Side

Kitchen, 10'8 x 9'4, basement access, side porch access, small balcony

Living Room, 12'3 x 20', access to front porch

Right Side

Living Room, 12'7 x 23', hardwood, back porch access

Dining/Kitchen, 15'4 x 22'4, L shaped, basement access

Second Floor

Bedroom, 11'3 x 12'8, carpet

Bedroom, 9'3 x 11'7

Full Bathroom, 7' x 8'13, tub only, closet, no toilet

Full Bathroom, 7'10 x 6'7, tub only, toilet disconnected

Open Area (at top of stairs), 8'9 x 12'10, closet

Pass Thru Bedroom, 12' x 11'17

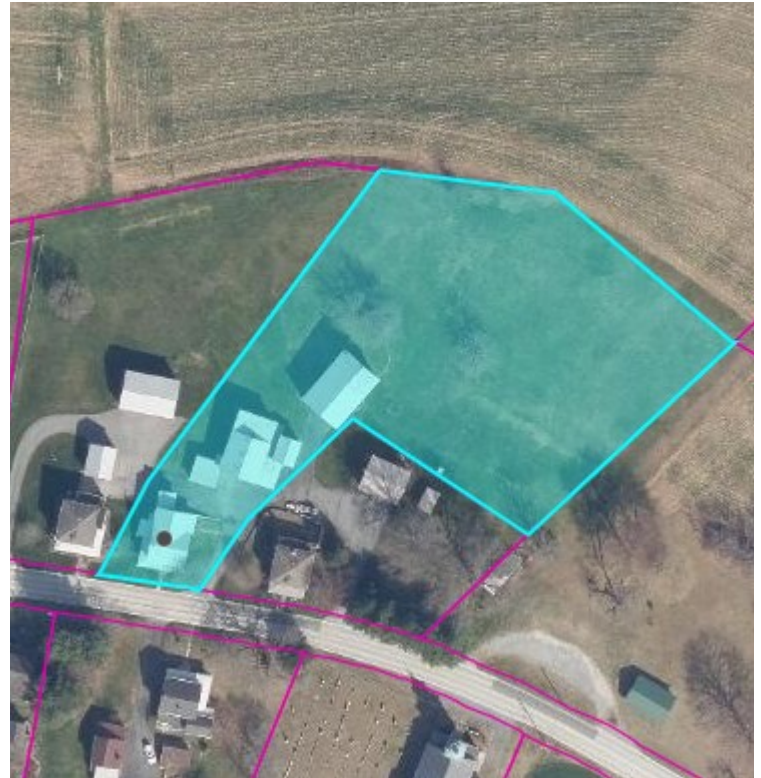
Exterior

Tobacco Barn, 47' x 32'

Large 4 Car Detached Garage

Country setting, Farmland views

** All Measurements Approximate*



For information regarding our recommended financial lenders call 717-664-5238

Real Estate Terms & Conditions: 10% down day of sale. Balance due at settlement on or before 45 days.
Announcements made on day of sale take precedence over advertised information.

This fact sheet is provided as a courtesy. Information included is believed to be accurate & has been provided to us by the consignor. John M. Hess Auction Service is not responsible for any clerical errors or misrepresentations by consignor in above printed materials. The purchaser is responsible to research and verify any and all information regarding this property.