

TWO-PARCEL RESIDENTIAL OPPORTUNITY

Thursday, June 18, 2026 • 6pm

67 W. Frederick St & 71 W. Frederick St,
Millersville, PA 17551

Selling two neighboring parcels on the same evening—both all-brick homes in close walking distance to Millersville University.

Parcel 1 (67 W. Frederick St) is well cared for and ready for a new family. It features a functional layout with a welcoming entryway, living room, spacious kitchen, and dining room on the first floor. The second floor offers four bedrooms and a full bathroom. The basement is currently unfinished, providing excellent potential for storage. Additional amenities include off-street parking accessed from an alley off N. Prince Street, a spacious front porch, and a detached garage.

Parcel 2 (71 W. Frederick St) Offers a similar layout, including a welcoming entryway, living room, spacious kitchen, and dining room. Off the kitchen, a newer addition provides unlimited potential and features a half bath and a laundry space, along with access to a screened-in porch. The second-floor features four bedrooms and a full bathroom. The basement is unfinished, providing great storage potential. This home is in need of repairs due to a significant water leak but otherwise it appears to be in good condition. Exterior features include a patio, a detached two-story barn that could also serve as a garage, an in-ground pool in disrepair, and off-street parking access from an alley off N. Prince Street.



Open Houses: Sat. June 6, 10am-12pm
& Mon. June 8, 5pm-6:30pm
Or Call For An Appointment



FEATURES



4 BEDROOMS IN EACH PARCEL



CONVENIENTLY LOCATED



OFF-STREET PARKING

Auction for: Pete Hazangeles Revocable Trust
Attorney: Vance Antonacci

LEAD AUCTIONEER: JOHN M. HESS



717-664-5238 or 877-599-8894

www.hessauctiongroup.com

contact@hessauctiongroup.com

JOHN M. HESS AUCTION SERVICE, INC.

AY000253L

Type: Single Family Dwelling
Construction: Masonry
Exterior: Common Brick
Roof: Slate
Garage: Parcel 1: Detached Garage
Square Footage: Parcel 1: 1,918 Sq. Ft.,
Parcel 2: 1,848 Sq. Ft
Lot Size: 0.29 Acres Each

Year Built: 1900
Heating/Cooling: Oil Fired / Forced Air Furnace
Water/Sewer: Public System
Zoning: Low Density Residential
Taxes: Approximately \$5,408
School District: Penn Manor SD
Township: Millersville Boro

Parcel 1- 67 W. Frederick St

First Floor

Entryway, 12'4 x 12'11, hardwood
Living Room, 12'10 x 14, hardwood, ceiling fan, columns
Kitchen, 12'9 x 14'5, vinyl
Dining Room, 12'9 x 15'2, hardwood, ceiling fan, pocket doors, outside entrance

Second Floor

Bedroom, 11'10 x 12'2, hardwood, closet
Bedroom, 12' x 12', hardwood, closet
Bedroom, 11'8 x 12'3, hardwood, closet, balcony access
Bedroom, 11'1 x 14'8, hardwood, closet, attic access

Full Bathroom, 8'7 x 6'2, vinyl, tub/shower

Unfinished Basement

Laundry hook up
Exterior
Deck off of Kitchen
Detached garage
Off street parking off of N. Prince Street, no on street parking on West Frederick St
Bus Stop on West Frederick St
Large front porch
Convenient location to Millersville University

Parcel 2- 71 W. Frederick St

First Floor

Entryway, 12'2 x 13'10, hardwood
Living Room, 12'8 x 12'8, hardwood, columns
Spacious Kitchen, 12'2 x 13'6, vinyl
Dining Room, 15'3 x 14'11, hardwood, bow window
Laundry/Mudroom, 9'9 x 11'4, tile
Half Bathroom, 2'8 x 5'5, tile
Screened in porch, 12'6 x 12'6 (in need of repair)

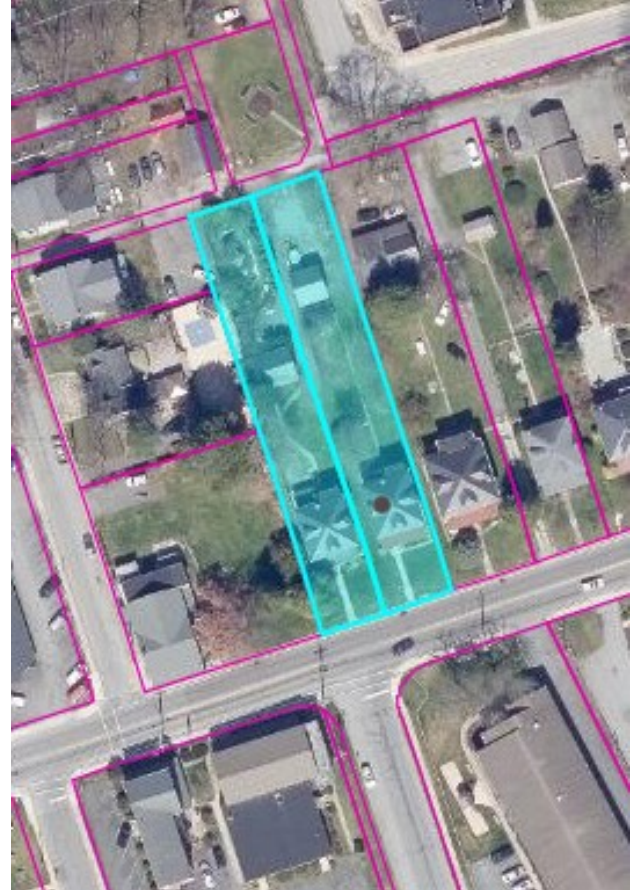
Second Floor

Bedroom, 12'4 x 12'4, hardwood, closet
Bedroom, 12'1 x 9'11, hardwood, closet,
Bedroom, 14'6 x 11'8, hardwood, closet, balcony access, bow window
Bedroom, 12'6 x 12'6, hardwood, closet, attic access
Full Bathroom, 8'7 x 6', vinyl, tub/shower

Unfinished Basement

Laundry hook up
Exterior
Patio
2 Story Detached Barn
Inground Pool (in disrepair)
Off street parking off of N. Prince Street, no on street parking on West Frederick St
Bus Stop on West Frederick St
Large front porch
Convenient location to Millersville University

***ALL MEASUREMENTS APPROXIMATE**



For information regarding our recommended financial lenders call 717-664-5238

Real Estate Terms & Conditions: 10% down day of sale. Balance due at settlement on or before 45 days.
Announcements made on day of sale take precedence over advertised information.

This fact sheet is provided as a courtesy. Information included is believed to be accurate & has been provided to us by the consignor. John M. Hess Auction Service is not responsible for any clerical errors or misrepresentations by consignor in above printed materials. The purchaser is responsible to research and verify any and all information regarding this property.