

## 8 ACRE COMMERCIAL OPPORTUNITY W/ 4 BEDROOM HOME

Thursday, June 11, 2026 • 6pm

333 Newcomer Rd,  
Windsor, PA 17366

This 8-acre, commercially zoned property features a custom-built home and offers exceptional potential, with two homes and a variety of utility buildings in a convenient location suited for many businesses' uses. **The custom-built home includes** a cozy family room off the kitchen with a fireplace, a first-floor laundry area, a spacious kitchen with an island, and a breezeway leading to a half bath. Upstairs, you'll find four bedrooms and two full bathrooms. **Additional amenities include** a fenced-in yard .

The second home is a mobile home and will require significant cosmetic updates. The property was formerly used as a commercial dog kennel and includes a variety of outbuildings, one of which was previously operated as a general store.

Don't miss this rare opportunity to own a versatile property with space, functionality, and endless potential.



Open Houses: Sat. May 30, 10am-12pm  
& Mon. June 1, 5pm-6:30pm  
Or Call For An Appointment



### FEATURES



4 BEDROOM HOME



UTILITY BUILDINGS



FENCED-IN YARD



Auction for: Terry Herb

LEAD AUCTIONEER: JOHN M. HESS

717-664-5238 or 877-599-8894

[www.hessauctiongroup.com](http://www.hessauctiongroup.com)

[contact@hessauctiongroup.com](mailto:contact@hessauctiongroup.com)

JOHN M. HESS AUCTION SERVICE, INC.

AY000253L

**Type:** 2-Story  
**Construction:** Frame  
**Exterior:** Vinyl Siding  
**Roof:** Asphalt  
**Garage:** Attached 2 Car Garage  
**Square Footage:** 2,488 Sq. Ft.  
**Lot Size:** 7.94 Acres  
**Year Built:** 1998

**Heating/Cooling:** Baseboard / Central A/C  
**Water/Sewer:** Well / Sewer  
**Zoning:** Commercial  
**Taxes:** \$10,891  
**School District:** Eastern York SD  
**Township:** Lower Windsor Twp

### First Floor

Family Room Off Kitchen W/ Fireplace

1st Floor Laundry

Kitchen- Island

Fenced in Yard

Breezeway W/ Half Bathroom

### Second Floor

4 Bedrooms

2 Full Bathrooms

### Utility buildings

12 x 16

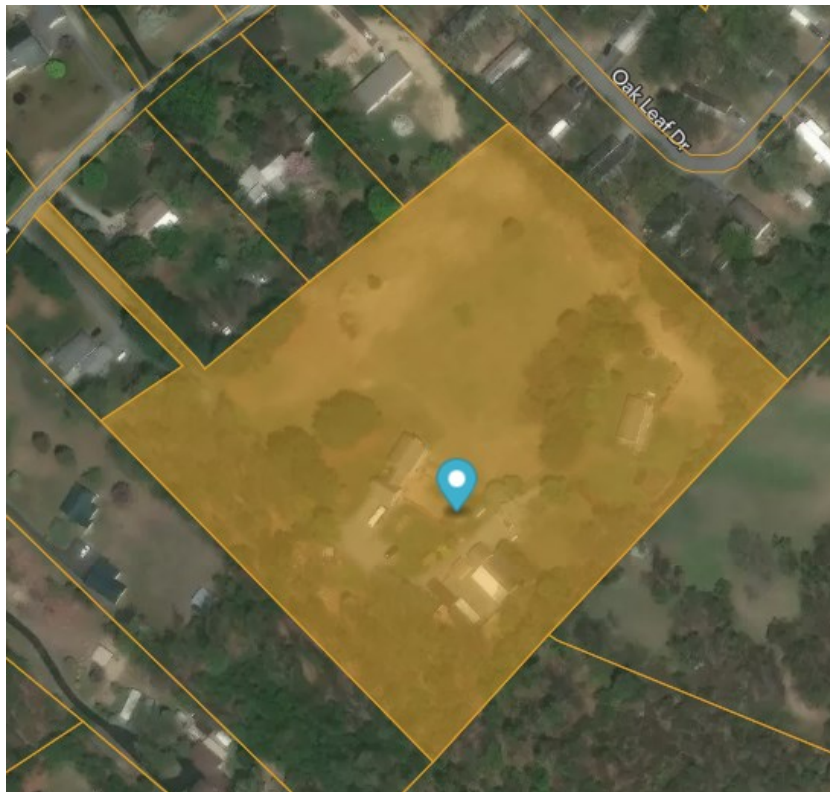
14 x 40

13 x 32

20 x 12 (General Store)

24 x 20

16 x 50 (Dog Kennel)



**\*For information regarding our recommended financial lenders call 717-664-5238\***

**Real Estate Terms & Conditions:** 10% down day of sale. Balance due at settlement on or before 45 days.  
Announcements made on day of sale take precedence over advertised information.

This fact sheet is provided as a courtesy. Information included is believed to be accurate & has been provided to us by the consignor. John M. Hess Auction Service is not responsible for any clerical errors or misrepresentations by consignor in above printed materials. The purchaser is responsible to research and verify any and all information regarding this property.