

## MANHEIM TWP, 3 BEDROOM BRICK HOME W/ EXTRA LARGE LOT

**Tuesday, June 30, 2026 • 6pm**

1996 Park Plaza,  
Lancaster, PA 17601

**T**his spacious three-bedroom home offers a well-designed layout with generous living spaces throughout. **The main floor features** an eat-in kitchen, formal dining room, convenient powder room, and a large family room highlighted by a cozy fireplace. **An additional oversized great room with beautiful brick flooring provides** the perfect space for entertainment, gatherings, or relaxing. **The second floor includes** three bedrooms, including one with a walk-in closet, a full bathroom, and access to a walk-up attic offering excellent storage potential. **The unfinished basement houses** the mechanical systems and provides additional storage or workshop space.



**Open Houses:**  
**Sat. June 20, 10am-12pm**  
**& Mon. June 22, 5pm-6:30pm**  
**Or Call For An Appointment**



**GARAGE**



**BACK OF HOUSE**



**SUN PORCH**

### FEATURES



**Oversized Great Room**



**Lots of Storage Space**



**Brick Flooring**

Auction for: James B. McMullin Estate  
Attorney: Sam Mecum

**LEAD AUCTIONEER: PHIL NISSLEY**



 717-664-5238 or 877-599-8894

 [www.hessauctiongroup.com](http://www.hessauctiongroup.com)

 [contact@hessauctiongroup.com](mailto:contact@hessauctiongroup.com)

**Type:** Single Family Dwelling  
**Construction:** Frame & Masonry  
**Exterior:** Plywood & Brick  
**Roof:** Composition Shingles  
**Garage:** Attached Garage  
**Square Footage:** 2,442 Sq. Ft.  
**Lot Size:** 0.51 Acres  
**Year Built:** 1947

**Heating/Cooling:** Forced Air Furnace  
**Water/Sewer:** Public System  
**Zoning:** Residential  
**Taxes:** \$4,964  
**School District:** Manheim Township SD  
**Township:** Manheim Twp

## First Floor

Living Room, 13'3 x 25', carpet, fireplace

Eat in Kitchen, 18'8 x 10'8, vinyl, pantry closet

Dining Room, 11'8 x 13'2, carpet

Family Room/Sun Porch, 30' x 27', brick floor, outside entrance, garage access

Half Bathroom, 5'8 x 4'2

## Second Floor

Bedroom, 10'8 x 11', carpet, closet

Bedroom, 12'3 x 14'8, carpet, closet

Bedroom, 13'3 x 16'5, carpet, closet

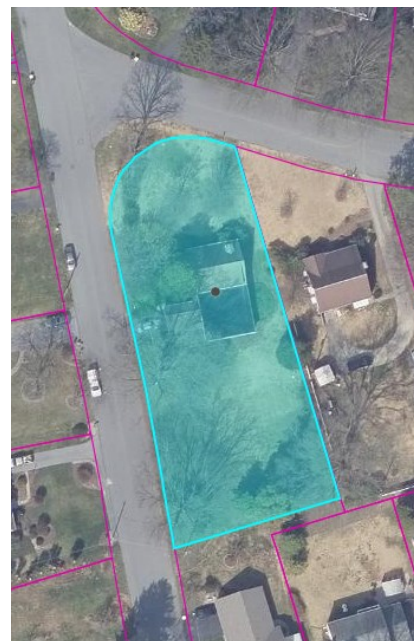
Full Bathroom, 4'8 x 11', vinyl, tub/shower

## Exterior

Driveway off of Concord Place

## Basement

Unfinished, laundry hook up



**\*ALL MEASUREMENTS APPROXIMATE**

**\*For information regarding our recommended financial lenders call 717-664-5238\***

**Real Estate Terms & Conditions:** 10% down day of sale. Balance due at settlement on or before 45 days.  
Announcements made on day of sale take precedence over advertised information.

This fact sheet is provided as a courtesy. Information included is believed to be accurate & has been provided to us by the consignor. John M. Hess Auction Service is not responsible for any clerical errors or misrepresentations by consignor in above printed materials. The purchaser is responsible to research and verify any and all information regarding this property.